



DOSING AND ADMINISTRATION

A guide to starting your patients on Evrysdi

Indication

Evrysdi is indicated for the treatment of spinal muscular atrophy (SMA) in patients 2 months of age and older.

Important Safety Information

Interactions with Substrates of MATE Transporters

- Based on in vitro data, Evrysdi may increase plasma concentrations of drugs eliminated via MATE1 or MATE2-K, such as metformin
- Avoid coadministration of Evrysdi with MATE (multidrug and toxin extrusion) substrates. If coadministration cannot be avoided, monitor for drug-related toxicities and consider dosage reduction of the coadministered drug if needed

Please see additional Important Safety Information throughout and accompanying full Prescribing Information.

FOR HEALTHCARE PROFESSIONALS

DOSING INFORMATION FOR PHYSICIANS

Evrysdi is the first and only at-home treatment for SMA¹

| | | |
|--|--|--|
|  <p>Liquid solution</p> |  <p>Taken via oral syringe, either by mouth or feeding tube</p> |  <p>Self-administered or delivered with help from caregiver</p> |
|--|--|--|

Evrysdi is a disease-modifying therapy approved to treat SMA in infants,* children, and adults

*2 months and older

Select dosing instructions

Please refer your patients or their caregivers to the Instructions for Use for complete information on how to take or administer Evrysdi.

Instruct patients to:



Take their medication at approximately the same time each day after a meal or breastfeeding
Evrysdi cannot be mixed with formula or milk



Drink water after administration to ensure the drug has been completely swallowed

Important Safety Information (continued)

Pregnancy

- In animal studies, administration of Evrysdi during pregnancy or throughout pregnancy and lactation resulted in adverse effects on development
- Based on animal data, advise pregnant women of the potential risk to the fetus. Pregnancy testing is recommended for females of reproductive potential prior to initiating Evrysdi. Advise female patients of reproductive potential to use effective contraception during treatment with Evrysdi and for at least 1 month after the last dose

Please see additional Important Safety Information throughout and accompanying full Prescribing Information.

Physicians determine the daily dose¹

The recommended dose is based on a patient's age and weight. Dose modifications will be required in order to reflect changes in the weight of children <2 years of age or individuals <20 kg.

USE TABLES BELOW TO DETERMINE THE RECOMMENDED ONCE-DAILY DOSE IN MG FOR EACH PATIENT

| | Recommended once-daily dose |
|----------------------|-----------------------------|
| 2 months to <2 years | 0.2 mg/kg x weight (kg) |

| | Weight | Recommended once-daily dose |
|----------|--------|-----------------------------|
| ≥2 years | <20 kg | 0.25 mg/kg x weight (kg) |
| | ≥20 kg | 5 mg |

The maximum recommended dose of Evrysdi is 5 mg once daily*

- Evrysdi must be constituted by a pharmacist prior to dispensing, and dose changes must be made under the supervision of the physician

Before prescribing, review the dosing and administration instructions for Evrysdi with your patients or their caregivers

*Based on in vitro data, Evrysdi may increase plasma concentrations of drugs eliminated via MATE1 or MATE2-K, such as metformin. Avoid coadministration of Evrysdi with MATE substrates. If coadministration cannot be avoided, monitor for drug-related toxicities and consider dosage reduction of the coadministered drug.

Important Safety Information (continued)

Breastfeeding

- There is no data on the presence of Evrysdi in human milk, the effects on the breastfed infant, or the effects on milk production. The developmental and health benefits of breastfeeding should be considered along with the mother's clinical need for Evrysdi and any potential adverse effects on the breastfed infant

Please see additional Important Safety Information throughout and accompanying full Prescribing Information.



COMMON QUESTIONS FROM PATIENTS AND CAREGIVERS

- 1 How long can Evrydsi be stored in the refrigerator?**
Evrydsi lasts up to 64 days in the refrigerator at a temperature of 36°F to 46°F. The liquid solution should never be frozen, and should be stored in an upright position with the cap tightly closed to avoid spillage. An expiration date will be indicated on the bottle after constitution by the pharmacist. When traveling, Evrydsi should be stored in an insulated cooler with ice packs at the recommended temperature of 36°F to 46°F.¹
- 2 What if vomiting occurs or the dose of Evrydsi is not fully swallowed?**
If a dose is not fully swallowed or vomiting occurs after administration, another dose should not be taken to make up for the lost dose; the next dose should be taken the following day at the regularly scheduled time.¹
- 3 What if a dose is missed?**
If a planned dose is missed and 6 hours or less have passed, Evrydsi should be taken as soon as possible, and the regular dosing schedule should be resumed on the next day. If 6 hours or more have passed, the missed dose should be skipped, and the regular dosing schedule should be resumed on the next day.¹
- 4 What should patients and caregivers do if they receive an incomplete order or the shipment is delayed?**
If an incomplete order is received or the shipment is delayed, advise patients or caregivers to contact Accredo, an Express Scripts specialty pharmacy, at (855) 525-7995.
- 5 Will the syringes provided work with various feeding tubes (ie, G-tube, NG-tube)?**
Each monthly shipment of Evrydsi will include ENFit® compatible oral/enteral syringes.² The enclosed syringes will work with a variety of feeding tubes, including ENFit® feeding tubes. Accredo stocks the most common adapters so that syringes will work with most oral/enteral feeding tubes. If Accredo does not provide the correct adapter, they will work with you, your patients, and/or caregivers to acquire the appropriate adapter.
- 6 What if any content of a shipment (bottles, syringes, etc) is damaged?**
If the shipment is damaged, advise patients or caregivers to contact Accredo at (855) 525-7995.
- 7 Can Evrydsi be picked up from a retail pharmacy?**
Evrydsi cannot be filled at a retail pharmacy. Evrydsi will be shipped directly to patients' homes after it has been prepared by Accredo.

Important Safety Information (continued)

Potential Effects on Male Fertility

- Male fertility may be compromised by treatment with Evrydsi. Counsel male patients on the potential effects on fertility. Male patients may consider sperm preservation prior to treatment

Hepatic Impairment

- The safety and efficacy of Evrydsi in patients with hepatic impairment have not been studied
- Because Evrydsi is predominantly metabolized in the liver, hepatic impairment may potentially increase the exposures to Evrydsi. Avoid use of Evrydsi in patients with impaired hepatic function

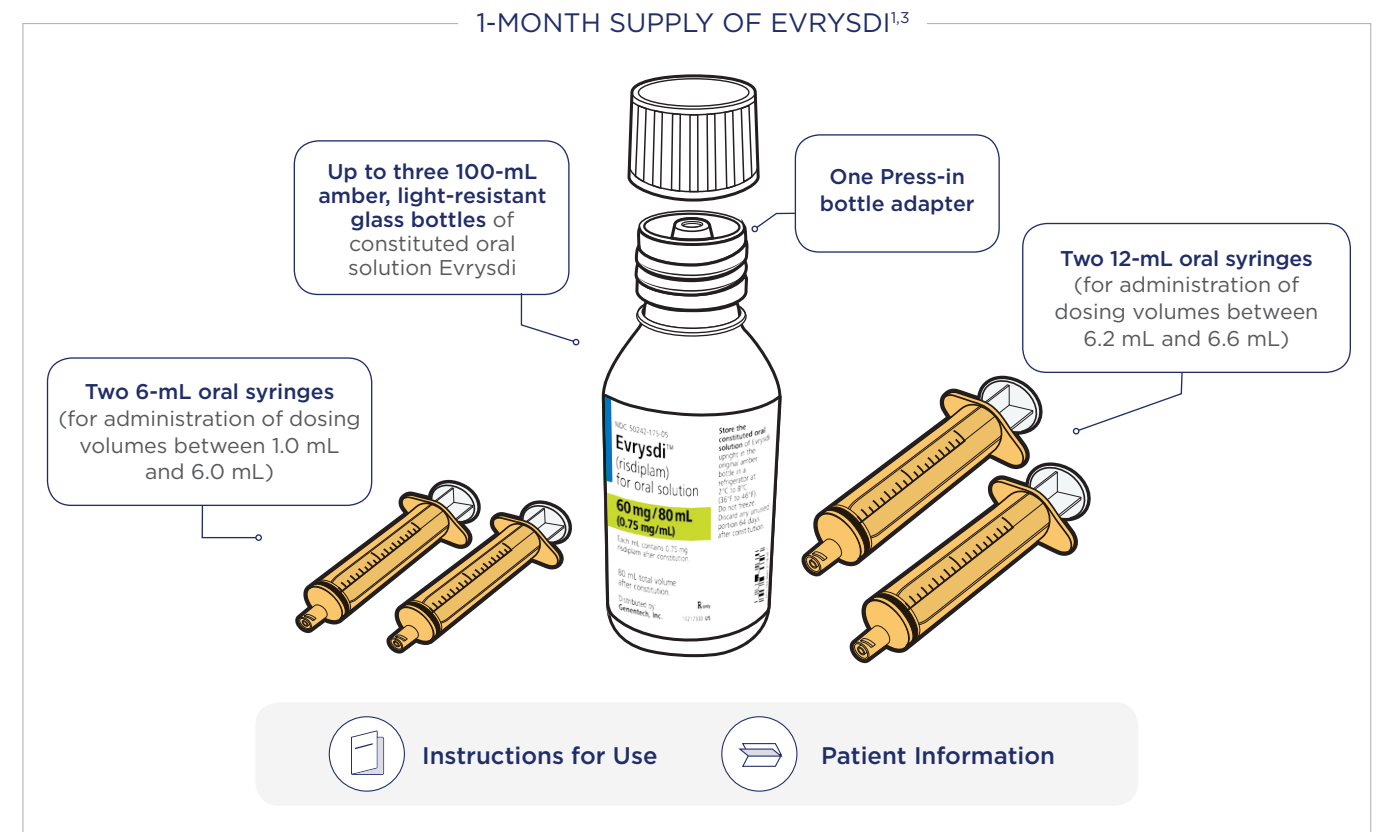
Please see additional Important Safety Information throughout and accompanying full Prescribing Information.

SPECIALTY PHARMACY FOR DISPENSING EVRYSDI

Accredo Health Group, Inc.

Preparation of the constituted oral solution of Evrydsi from its powder state is coordinated by a specialty pharmacy (SP). Accredo,* an Express Scripts SP, ships ready-to-use medication directly to patients and caregivers.

The contents of each shipment are based on the specific dosing needs of each patient. They will contain:



A pharmacist will select the appropriate oral syringes (6 mL or 12 mL) based on the patient's dosage and remove the other oral syringes from the carton. Inform Evrydsi patients and their caregivers of their specific, calculated dosing volume and the resulting syringe size needed for daily administration.

Remind patients to read the important handling information described in the Instructions for Use and Patient Information, and to promptly answer any calls they may receive from Accredo personnel to avoid dispensation delays.

Instruct patients and caregivers to call Accredo at (855) 525-7995 with any questions regarding dispensation, administration, or disposal of Evrydsi

Accredo is a registered trademark of the Accredo Health Group, Inc., an Express Scripts Company.

*Accredo Health Group, Inc., is an Express Scripts specialty pharmacy. Accredo is not part of Genentech and maintains independence in its operations as a specialty pharmacy and in its role as a healthcare provider.



DOSING INFORMATION FOR PHARMACISTS

Pharmacists calculate or verify the dosing volume¹

After the physician determines the correct dose for a patient, the prescription is sent to the specialty pharmacy. Since Evrysdi is administered as a solution, the calculated recommended daily dose needs to be converted from mg to a dosing volume in mL. Using the concentration of 0.75 mg/mL constituted solution, the calculation would be:

$$\text{Recommended daily dose (mg)} \div 0.75 \text{ mg/mL} = \text{Dosing volume (mL)}$$

Pharmacists select the appropriate syringe for administration¹

There are 2 syringe sizes available for administration of Evrysdi: 6 mL and 12 mL.



6-mL syringe

For doses between 1.0 mL and 6.0 mL



12-mL syringe

For doses between 6.2 mL and 6.6 mL

Once the daily dosing volume of Evrysdi has been calculated, pharmacists should use the table below to determine which syringe will be needed for administration.

Pharmacists will round dosing volume based on the increments of the syringe

| Dosing volume | Syringe size | Syringe increments |
|------------------|--------------|--------------------|
| 1.0 mL to 6.0 mL | 6 mL | 0.1 mL |
| 6.2 mL to 6.6 mL | 12 mL | 0.2 mL |

Inform patients and caregivers of the dosing volume and the syringe they will use for administration of Evrysdi

Important Safety Information (continued)

Most Common Adverse Reactions

- The most common adverse reactions in later-onset SMA (incidence in at least 10% of patients treated with Evrysdi and more frequent than control) were fever, diarrhea, and rash
- The most common adverse reactions in infantile-onset SMA were similar to those observed in later-onset SMA patients. Additionally, adverse reactions with an incidence of at least 10% were upper respiratory tract infection, pneumonia, constipation, and vomiting

You may report side effects to the FDA at **1-800-FDA-1088** or **www.fda.gov/medwatch**. You may also report side effects to Genentech at **1-888-835-2555**.

Please see additional Important Safety Information throughout and accompanying full Prescribing Information.

EVRYSDI START FORM INFORMATION FOR PHYSICIANS

Refer to the guidance below when filling out the Prescriber Service Form

Page 5 of the Evrysdi Start Form (the green “Prescriber Service Form”) should be filled out by the physician for all patient support requests.

- Areas highlighted in **red** indicate required information. Please note that completing the entire form can expedite the approval process and help ensure patients quickly receive the full range of support and resources

Insurance Information

You may complete the insurance information in Step 2 or attach a copy of the patient’s insurance card.

Diagnosis and Clinical Information

To expedite processing and delivery, be sure to complete Step 4 in its entirety:

- Include the appropriate diagnosis code and copy number or SMA type
- The patient’s weight can be entered in either lb or kg; please indicate which unit of measure is used

Evrysdi Start Program

With the Evrysdi Start Program, eligible patients may receive free medicine while waiting for an insurance coverage determination. Be sure to check the box in Step 6 to enroll your patient.

Signature

- Accredo, our specialty pharmacy partner, requires an original signature. This helps to avoid delays in processing. MySMA Support will forward the Start Form to Accredo for processing
- The Generic Substitution line is provided to qualify the form as a valid prescription in certain states to determine eligibility. Note that there is no generic version of Evrysdi

The Prescriber Service Form can be submitted by:

- Faxing it to (833) 387-9700
- Completing it online at www.Evrysdi.com/Forms

GENENTECH PATIENT SUPPORT SERVICES **Evrysdi™ Start Form**
risdiplam
 www.evrysdi.com/forms Phone: (833) 387-9734 Fax: (833) 387-9700 *Required field M-US-00001154v1.0 4/20

Prescriber Service Form – To be completed by the prescriber

Step 1 Patient Information
 *First name: _____ *Last name: _____ Gender: Male Female
 *Date of Birth (MM/DD/YYYY): ____/____/____ Preferred language: English Spanish Other: _____
 Street: _____ Apt: _____
 City: _____ *State: _____ ZIP: _____
 Home phone: (____) _____ Cell phone: (____) _____ Do not contact patient
 Alternate contact name: _____ Relationship: _____ Alt. phone: (____) _____

Step 2 Insurance Information
 Is the patient insured? Yes No If insured, please fill out the information below or attach a copy of the patient's insurance cards and skip to step 3.
 COPY OF INSURANCE CARD ATTACHED

| Insurance name | Primary Insurance | Secondary Insurance | Pharmacy Benefit |
|----------------------------------|-------------------|---------------------|------------------|
| Subscriber name (if not patient) | | | |
| Subscriber/Policy ID # | | | |
| Group # | | | |
| Insurance phone | | | |

Step 3 Prescription Information

| Strength | Quantity | Directions | Refills |
|--|---|------------|---------|
| <input type="checkbox"/> Evrysdi (risdiplam) 0.75mg/mL, 80mL (in 100mL bottle) | <input type="checkbox"/> 1-month supply <input type="checkbox"/> Other: _____ | | |

Step 4 Diagnosis and Clinical Information
 *Diagnosis code(s): G12.0 Infantile spinal muscular atrophy type 1 G12.1 Other inherited spinal muscular atrophy Other: _____
 SMA type: 1 2 3 4 SMN2 copy number: _____ Patient weight: _____ Date measured: ____/____/____
 Has patient started prescribed Evrysdi (risdiplam)? Yes No Drug and non-drug allergies: _____ No known allergies
 Previous SMA therapy: Spinraza (nusinersen) Zolgensma (onasemnogene asepargovector) Other: _____

Step 5 Prescriber Information
 *First name: _____ *Last name: _____
 *Practice name: _____
 *Street: _____ Suite: _____
 *City: _____ *State: _____ *ZIP: _____ Prescriber tax ID #: _____
 Prescriber NPI #: _____ Group NPI #: _____
 Office contact: _____ Contact phone: (____) _____ Contact fax: (____) _____

Step 6 Evrysdi Start Program (Signature Required)
 I approve the dispensing of up to 2 free 30-day supplies of Evrysdi to my patient if they experience an insurance coverage delay and otherwise meet eligibility criteria. For full eligibility criteria, please speak to your Evrysdi representative.

Step 7 Health Care Provider Certification
 By submitting this form, I certify: (a) The above therapy is medically necessary for this patient and the treatment decision has been made by the prescribing physician. (b) If the indication for which an prescribing a Genentech product is not listed in the FDA-approved label, I am prescribing the medication for an "unapproved" use, meaning that the FDA has not approved the efficacy, dosage amount or safety of this medication for such a use. (c) I respect the authorization above and other protected health information (as defined by the Health Insurance Portability and Accountability Act of 1996 (HIPAA)) to Genentech, Inc., Genentech Access Solutions, the contracted dispensing pharmacy, or other contractors for the purpose of requesting reimbursement support, assisting in initiating or continuing therapy, as a break in treatment would negatively impact the patient's therapeutic outcome and (d) I will not attempt to seek reimbursement for free product provided to the patient. I request Genentech Access Solutions convey to the pharmacy chosen by the above-named patient the prescription described herein. (e) The services you are requesting on behalf of the patient, may include benefits investigation (BI), prior authorization support (PA), co-pay card and co-pay assistance foundation referral. (f) No action on these services will be taken until the patient consent document has been received. (g) Prescribers must comply with all state specific prescription requirements. (h) My patient meets the criteria for Genentech Patient Foundation (GPF). (i) I understand that Genentech reserves the right to modify or discontinue the program at any time and to verify the accuracy of information submitted. (j) I understand that the GPF does not provide free drug in the instance of an administrative error or a coverage restriction, such as a step edit. For certain products where the step edit may not be medically appropriate, as confirmed by the prescribing physician, the GPF may consider support following 1 level of appeal.

Sign, date & fax to (833) 387-9700 OR
 *Prescriber Signature – Dispense as Written (Original signature required) OR *Prescriber Signature – Generic Substitution (Original signature required) *Date




1 National Provider Identifier: ©2020 Genentech USA, Inc., San Francisco, CA. All rights reserved. M-US-00001154v1.0 4/20 Printed in USA



PROCESS OVERVIEW

Example dose calculation for theoretical patients

The examples in this table can help physicians and pharmacists understand how this process might work for different people with SMA.

| |  INFANT Age: 6 months Weight: 8.5 kg |  CHILD Age: 4 years Weight: 18 kg |  ADULT Age: 36 years Weight: 79 kg |
|-------------------------------------|---|--|---|
| 1 Determine daily dose | $0.2 \text{ mg/kg} \times 8.5 \text{ kg} = 1.7 \text{ mg}$ | $0.25 \text{ mg/kg} \times 18 \text{ kg} = 4.5 \text{ mg}$ | 5 mg |
| 2 Calculate dosing volume | $1.7 \text{ mg} \div (0.75 \text{ mg/mL}) = 2.27 \text{ mL}$ | $4.5 \text{ mg} \div (0.75 \text{ mg/mL}) = 6.0 \text{ mL}$ | $5 \text{ mg} \div (0.75 \text{ mg/mL}) = 6.67 \text{ mL}$ |
| 3 Select appropriate syringe | 6-mL syringe with a rounded dosing volume of 2.3 mL | 6-mL syringe with a rounded dosing volume of 6.0 mL | 12-mL syringe with a rounded dosing volume of 6.6 mL |

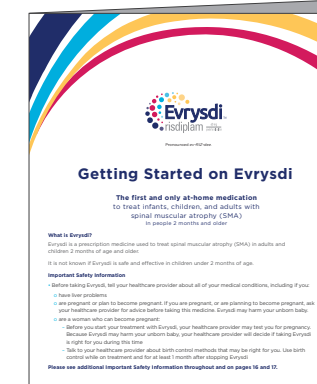
RESOURCES FOR YOU AND YOUR PATIENTS

Guide to getting started

A dosing guide for patients and caregivers includes information about Evrysdi and how it should be stored, prepared, and administered, as well as frequently asked questions and helpful diagrams for each step of the process.

For instructions on dose administration, advise the patient to follow all directions provided in the Instructions for Use

Talk to a Genentech Neuro Rare Disease Therapeutic Area Manager (NRD TAM) about receiving this guide.



Genentech is committed to providing you with educational support and resources. Call (833) 387-9734 to speak with an NRD TAM today

Important Safety Information (continued)

Interactions with Substrates of MATE Transporters

- Based on in vitro data, Evrysdi may increase plasma concentrations of drugs eliminated via MATE1 or MATE2-K, such as metformin
- Avoid coadministration of Evrysdi with MATE (multidrug and toxin extrusion) substrates. If coadministration cannot be avoided, monitor for drug-related toxicities and consider dosage reduction of the coadministered drug if needed

Please see additional Important Safety Information throughout and accompanying full Prescribing Information.



IMPORTANT SAFETY INFORMATION

Indication

Evrysdi is indicated for the treatment of spinal muscular atrophy (SMA) in patients 2 months of age and older.

Important Safety Information

Interactions with Substrates of MATE Transporters

- Based on in vitro data, Evrysdi may increase plasma concentrations of drugs eliminated via MATE1 or MATE2-K, such as metformin
- Avoid coadministration of Evrysdi with MATE (multidrug and toxin extrusion) substrates. If coadministration cannot be avoided, monitor for drug-related toxicities and consider dosage reduction of the coadministered drug if needed

Pregnancy

- In animal studies, administration of Evrysdi during pregnancy or throughout pregnancy and lactation resulted in adverse effects on development
- Based on animal data, advise pregnant women of the potential risk to the fetus. Pregnancy testing is recommended for females of reproductive potential prior to initiating Evrysdi. Advise female patients of reproductive potential to use effective contraception during treatment with Evrysdi and for at least 1 month after the last dose

Breastfeeding

- There is no data on the presence of Evrysdi in human milk, the effects on the breastfed infant, or the effects on milk production. The developmental and health benefits of breastfeeding should be considered along with the mother's clinical need for Evrysdi and any potential adverse effects on the breastfed infant

Potential Effects on Male Fertility

- Male fertility may be compromised by treatment with Evrysdi. Counsel male patients on the potential effects on fertility. Male patients may consider sperm preservation prior to treatment

Hepatic Impairment

- The safety and efficacy of Evrysdi in patients with hepatic impairment have not been studied
- Because Evrysdi is predominantly metabolized in the liver, hepatic impairment may potentially increase the exposures to Evrysdi. Avoid use of Evrysdi in patients with impaired hepatic function

Most Common Adverse Reactions

- The most common adverse reactions in later-onset SMA (incidence in at least 10% of patients treated with Evrysdi and more frequent than control) were fever, diarrhea, and rash
- The most common adverse reactions in infantile-onset SMA were similar to those observed in later-onset SMA patients. Additionally, adverse reactions with an incidence of at least 10% were upper respiratory tract infection, pneumonia, constipation, and vomiting

You may report side effects to the FDA at **1-800-FDA-1088** or **www.fda.gov/medwatch**. You may also report side effects to Genentech at **1-888-835-2555**.

Please see accompanying full Prescribing Information for additional Important Safety Information.

REFERENCES:

1. Evrysdi™ (risdiplam) Prescribing Information. Genentech, Inc.
2. Data on file. Genentech, Inc.
3. Evrysdi™ (risdiplam) Instructions for Constitution. Genentech, Inc.



Indication

Evrysdi is indicated for the treatment of spinal muscular atrophy (SMA) in patients 2 months of age and older.

Important Safety Information

Interactions with Substrates of MATE Transporters

- Based on in vitro data, Evrysdi may increase plasma concentrations of drugs eliminated via MATE1 or MATE2-K, such as metformin
- Avoid coadministration of Evrysdi with MATE (multidrug and toxin extrusion) substrates. If coadministration cannot be avoided, monitor for drug-related toxicities and consider dosage reduction of the coadministered drug if needed

Please see additional Important Safety Information throughout and accompanying full Prescribing Information.

© Genentech USA, Inc. All rights reserved. Printed in USA.
M-US-00002765(v1.0) 08/2020

Genentech
A Member of the Roche Group



HIGHLIGHTS OF PRESCRIBING INFORMATION

These highlights do not include all the information needed to use EVRYSDI safely and effectively. See full prescribing information for EVRYSDI.

EVRYSDI™ (risdiplam) for oral solution
Initial U.S. Approval: 2020

INDICATIONS AND USAGE

EVRYSDI is a survival of motor neuron 2 (SMN2) splicing modifier indicated for the treatment of spinal muscular atrophy (SMA) in patients 2 months of age and older. (1)

DOSAGE AND ADMINISTRATION

EVRYSDI must be constituted by a pharmacist prior to dispensing. Administer orally once daily after a meal using the provided oral syringe. (2.1, 2.4)

| Age and Body Weight | Recommended Daily Dosage |
|---|--------------------------|
| 2 months to less than 2 years of age | 0.2 mg/kg |
| 2 years of age and older weighing less than 20 kg | 0.25 mg/kg |
| 2 years of age and older weighing 20 kg or more | 5 mg |

See Full Prescribing Information for important preparation and administration instructions. (2.1, 2.4)

DOSAGE FORMS AND STRENGTHS

For Oral Solution: 60 mg of risdiplam as a powder for constitution to provide 0.75 mg/mL solution. (3)

CONTRAINDICATIONS

None. (4)

ADVERSE REACTIONS

The most common adverse reactions in later-onset SMA (incidence at least 10% of patients treated with EVRYSDI and more frequent than control) were fever, diarrhea, and rash. (6.1)

The most common adverse reactions in infantile-onset SMA were similar to those observed in later-onset SMA patients. Additionally, adverse reactions with an incidence of at least 10% were upper respiratory tract infection, pneumonia, constipation, and vomiting. (6.1)

To report SUSPECTED ADVERSE REACTIONS, contact Genentech at 1-888-835-2555 or FDA at 1-800-FDA-1088 or www.fda.gov/medwatch.

DRUG INTERACTIONS

Avoid coadministration with drugs that are substrates of multidrug and toxin extrusion (MATE) transporters. (7.1)

USE IN SPECIFIC POPULATIONS

Pregnancy: Based on animal data, may cause fetal harm. (8.1)

Hepatic Impairment: Avoid use in patients with hepatic impairment. (8.6)

See 17 for PATIENT COUNSELING INFORMATION and FDA-approved patient labeling.

Revised: 8/2020

FULL PRESCRIBING INFORMATION: CONTENTS*

1 INDICATIONS AND USAGE

2 DOSAGE AND ADMINISTRATION

- 2.1 Important Administration Instructions
- 2.2 Dosing Information
- 2.3 Missed Dose
- 2.4 Preparation of Oral Solution by Pharmacists

3 DOSAGE FORMS AND STRENGTHS

4 CONTRAINDICATIONS

6 ADVERSE REACTIONS

- 6.1 Clinical Trials Experience

7 DRUG INTERACTIONS

- 7.1 Effect of EVRYSDI on Substrates of Multidrug and Toxin Extrusion (MATE) Protein Transporters

8 USE IN SPECIFIC POPULATIONS

- 8.1 Pregnancy
- 8.2 Lactation
- 8.3 Females and Males of Reproductive Potential
- 8.4 Pediatric Use
- 8.5 Geriatric Use
- 8.6 Hepatic Impairment

11 DESCRIPTION

12 CLINICAL PHARMACOLOGY

- 12.1 Mechanism of Action
- 12.2 Pharmacodynamics
- 12.3 Pharmacokinetics

13 NONCLINICAL TOXICOLOGY

- 13.1 Carcinogenesis, Mutagenesis, Impairment of Fertility
- 13.2 Animal Toxicology and/or Pharmacology

14 CLINICAL STUDIES

- 14.1 Infantile-Onset SMA
- 14.2 Later-Onset SMA

16 HOW SUPPLIED/STORAGE AND HANDLING

- 16.1 How Supplied
- 16.2 Storage and Handling

17 PATIENT COUNSELING INFORMATION

* Sections or subsections omitted from the full prescribing information are not listed.

FULL PRESCRIBING INFORMATION

1 INDICATIONS AND USAGE

EVERYSOI is indicated for the treatment of spinal muscular atrophy (SMA) in patients 2 months of age and older.

2 DOSAGE AND ADMINISTRATION

2.1 Important Administration Instructions

Dose Preparation

It is recommended that a healthcare provider discuss with the patient or caregiver how to prepare the prescribed daily dose prior to administration of the first dose [see *Instructions for Use*].

Instruct patients or caregivers to prepare the dose using the reusable oral syringe provided.

EVERYSOI must be taken immediately after it is drawn up into the oral syringe. If EVERYSOI is not taken within 5 minutes, EVERYSOI should be discarded from the oral syringe, and a new dose should be prepared.

Dose Administration

EVERYSOI is taken orally once daily after a meal at approximately the same time each day.

In infants who are breastfed, EVERYSOI should be administered after breastfeeding. EVERYSOI cannot be mixed with formula or milk.

Instruct patients to drink water after taking EVERYSOI to ensure the drug has been completely swallowed.

If the patient is unable to swallow and has a nasogastric or gastrostomy tube, EVERYSOI can be administered via the tube. The tube should be flushed with water after delivering EVERYSOI [see *Instructions for Use*].

2.2 Dosing Information

EVERYSOI is administered orally once daily. The recommended dosage is determined by age and body weight (see Table 1).

Table 1 Adult and Pediatric Dosing Regimen by Age and Body Weight

| Age and Body Weight | Recommended Daily Dosage |
|---|--------------------------|
| 2 months to less than 2 years of age | 0.2 mg/kg |
| 2 years of age and older weighing less than 20 kg | 0.25 mg/kg |
| 2 years of age and older weighing 20 kg or more | 5 mg |

2.3 Missed Dose

If a dose of EVERYSOI is missed, EVERYSOI should be administered as soon as possible if still within 6 hours of the missed dose, and the usual dosing schedule can be resumed on the next day. Otherwise, the missed dose should be skipped, and the next dose should be taken at the regularly scheduled time on the next day.

If a dose is not fully swallowed or vomiting occurs after taking a dose of EVERYSOI, another dose should not be administered to make up for the lost dose. The patient should wait until the next day to take the next dose at the regularly scheduled time.

2.4 Preparation of Oral Solution by Pharmacists

EVERYSDI powder must be constituted to the oral solution by a pharmacist prior to dispensing to the patient.

Preparation of the EVERYSDI Oral Solution 0.75 mg/mL

The EVERYSDI “Instructions for Constitution” booklet contains more detailed instructions on the preparation of the oral solution [*see Instructions for Constitution*].

Caution should be exercised in the handling of EVERYSDI powder for oral solution. Avoid inhalation and direct contact with skin or mucous membranes with the dry powder and the constituted solution. If such contact occurs, wash thoroughly with soap and water; rinse eyes with water. Wear disposable gloves during the preparation and cleanup procedure.

1. Gently tap the bottom of the closed glass bottle to loosen the powder.
2. Remove the cap. Do not throw away the cap.
3. Carefully pour 79 mL of Purified Water into the EVERYSDI bottle to yield the 0.75 mg/mL oral solution. Do not mix EVERYSDI with formula or milk.
4. Insert the Press-In bottle adapter into the bottle opening by pushing it down against the bottle lip. Ensure it is completely pressed against the bottle lip.
5. Re-cap the bottle tightly and shake well for 15 seconds. Wait for 10 minutes. You should have obtained a clear solution. If not, shake well again for another 15 seconds.
6. Write the date of expiration of the constituted oral solution (calculated as 64 days after constitution) and the lot number on the bottle label. Peel off the part of the bottle label that has the expiration date of the powder.
7. Put the bottle back in its original carton.
8. Select the appropriate oral syringes (6 mL or 12 mL) based on the patient’s dosage and remove the other oral syringes from the carton.
9. Dispense with the “Instructions for Use” and FDA-approved patient labeling. Alert patients to read the important handling information described in the Instructions for Use.

Keep the constituted oral solution of EVERYSDI in the original amber bottle to protect from light. Store in a refrigerator at 2°C to 8°C (36°F to 46°F). Do not freeze. Discard any unused portion 64 days after constitution. Keep the bottle in an upright position with the cap tightly closed.

3 DOSAGE FORMS AND STRENGTHS

EVERYSDI for oral solution: 60 mg as a light yellow, yellow, greyish yellow, greenish yellow, or light green powder for constitution. Following constitution, the volume of the greenish yellow to yellow solution is 80 mL, providing 60 mg/80 mL (0.75 mg/mL) risdiplam.

4 CONTRAINDICATIONS

None.

6 ADVERSE REACTIONS

6.1 Clinical Trials Experience

Because clinical trials are conducted under widely varying conditions, adverse reaction rates observed in the clinical trials of a drug cannot be directly compared to rates in clinical trials of another drug and may not reflect the rates observed in practice.

In clinical trials including patients with infantile-onset SMA and later-onset SMA, a total of 337 patients (52% female, 72% Caucasian) were exposed to EVRYSDI for up to a maximum of 32 months, with 209 patients receiving treatment for more than 12 months. Forty-seven (14%) patients were 18 years and older, 74 (22%) were 12 years to less than 18 years, 154 (46%) were 2 years to less than 12 years, and 62 (18%) 2 months to less than 2 years.

Clinical Trial in Later-Onset SMA

The safety of EVRYSDI for later-onset SMA is based on data from a randomized, double-blinded, placebo-controlled study (Study 2 Part 2) in patients with SMA Type 2 or 3 (n = 180) [see *Clinical Studies (14.2)*]. The patient population in Study 2 Part 2 ranged in age from 2 to 25 years at the time of treatment start.

The most common adverse reactions (reported in at least 10% of patients treated with EVRYSDI and at an incidence greater than on placebo) in Study 2 Part 2 were fever, diarrhea, and rash. Table 2 lists the adverse reactions that occurred in at least 5% of patients treated with EVRYSDI and at an incidence $\geq 5\%$ greater than on placebo in Study 2 Part 2.

Table 2 Adverse Reactions Reported in $\geq 5\%$ of Patients Treated with EVRYSDI and with an Incidence $\geq 5\%$ Greater Than on Placebo in Study 2 Part 2

| Adverse Reaction | EVRYSDI (N = 120) % | Placebo (N = 60) % |
|--------------------------------------|---------------------------|--------------------------|
| Fever ¹ | 22 | 17 |
| Diarrhea | 17 | 8 |
| Rash ² | 17 | 2 |
| Mouth and aphthous ulcers | 7 | 0 |
| Arthralgia | 5 | 0 |
| Urinary tract infection ³ | 5 | 0 |

¹ Includes pyrexia and hyperpyrexia.

² Includes rash, erythema, rash maculo-papular, rash erythematous, rash papular, dermatitis allergic, and folliculitis.

³ Includes urinary tract infection and cystitis.

Clinical Trial in Infantile-Onset SMA

The safety of EVRYSDI therapy for infantile-onset SMA is based on data from an open-label study in 62 patients (Study 1) [see *Clinical Studies (14.1)*]. In Study 1 Part 1 (n = 21) and Part 2 (n = 41), 62 patients received EVRYSDI for up to 30 months (31 patients for more than 12 months). The patient population ranged in age from 2 to 7 months at the time of treatment start (weight range 4.1 to 10.6 kg).

The most frequent adverse reactions reported in infantile-onset SMA patients treated with EVRYSDI in Study 1 were similar to those observed in later-onset SMA patients in Study 2. Additionally, the following adverse reactions were reported in $\geq 10\%$ of patients: upper respiratory tract infection (including nasopharyngitis, rhinitis, respiratory tract infection), pneumonia, constipation, and vomiting.

7 DRUG INTERACTIONS

7.1 Effect of EVRYSDI on Substrates of Multidrug and Toxin Extrusion (MATE) Protein Transporters

Based on in vitro data, EVRYSDI may increase plasma concentrations of drugs eliminated via MATE1 or MATE2-K [see *Clinical Pharmacology (12.3)*], such as metformin. Avoid coadministration of EVRYSDI with MATE substrates. If coadministration cannot be avoided, monitor for drug-related toxicities and consider dosage reduction of the coadministered drug (based on the labeling of that drug) if needed.

8 USE IN SPECIFIC POPULATIONS

8.1 Pregnancy

Risk Summary

There are no adequate data on the developmental risk associated with the use of EVRYSDI in pregnant women. In animal studies, administration of risdiplam during pregnancy or throughout pregnancy and lactation resulted in adverse effects on development (embryofetal mortality, malformations, decreased fetal body weights, and reproductive impairment in offspring) at or above clinically relevant drug exposures [see *Data*].

The estimated background risk of major birth defects and miscarriage for the indicated populations is unknown. In the U.S. general population, the estimated background risk of major birth defect and miscarriage in clinically recognized pregnancies is 2% to 4% and 15% to 20%, respectively. Based on animal data, advise pregnant women of the potential risk to the fetus.

Data

Animal Data

Oral administration of risdiplam (0, 1, 3, or 7.5 mg/kg) to pregnant rats throughout organogenesis resulted in decreased fetal body weights and increased incidences of fetal structural variations at the highest dose tested, which was not associated with maternal toxicity. The no-effect level for adverse effects on embryofetal development (3 mg/kg/day) was associated with maternal plasma exposure (AUC) approximately 2 times that in humans at the maximum recommended human dose (MRHD) of 5 mg.

Oral administration of risdiplam (0, 1, 4, or 12 mg/kg) to pregnant rabbits throughout organogenesis resulted in embryofetal mortality, fetal malformations (hydrocephaly), and structural variations at the highest dose tested, which was associated with maternal toxicity. The no-effect dose for adverse effects on embryofetal development (4 mg/kg/day) was associated with maternal plasma exposure (AUC) approximately 4 times that in humans at the MRHD.

When risdiplam (0, 0.75, 1.5, or 3 mg/kg/day) was orally administered to rats throughout pregnancy and lactation, gestation was prolonged in the dams, and delayed sexual maturation (vaginal opening) and impaired reproductive function (decreased numbers of corpora lutea, implantation sites, and live embryos) were observed in female offspring at the highest dose. The no-effect dose for adverse effects on pre- and postnatal development in rats (1.5 mg/kg/day) was associated with maternal plasma exposure (AUC) similar to that in humans at the MRHD.

8.2 Lactation

Risk Summary

There are no data on the presence of risdiplam in human milk, the effects on the breastfed infant, or the effects on milk production. Risdiplam was excreted in the milk of lactating rats orally administered risdiplam.

The developmental and health benefits of breastfeeding should be considered along with the mother's clinical need for EVRYSDI and any potential adverse effects on the breastfed infant from EVRYSDI or from the underlying maternal condition.

8.3 Females and Males of Reproductive Potential

Studies of risdiplam in juvenile and adult rats and in monkeys demonstrated adverse effects on the reproductive organs, including germ cells, in males at clinically-relevant plasma exposures [*see Use in Specific Populations (8.4) and Nonclinical Toxicology (13.1)*].

Pregnancy Testing

Pregnancy testing is recommended for females of reproductive potential prior to initiating EVRYSDI [*see Use in Specific Populations (8.1)*].

Contraception

EVRYSDI may cause embryofetal harm when administered to a pregnant woman [*see Use in Specific Populations (8.1)*].

Female Patients

Advise female patients of reproductive potential to use effective contraception during treatment with EVRYSDI and for at least 1 month after her last dose.

Infertility

Male Patients

Male fertility may be compromised by treatment with EVRYSDI [*see Nonclinical Toxicology (13.1)*].

Counsel male patients of reproductive potential receiving EVRYSDI about the potential effects on fertility. Male patients may consider sperm preservation prior to treatment.

8.4 Pediatric Use

The safety and effectiveness of EVRYSDI in pediatric patients 2 months of age and older have been established [*see Clinical Studies (14)*]. Safety and effectiveness in pediatric patients below the age of 2 months have not been established [*see Clinical Pharmacology (12.3)*].

Juvenile Animal Toxicity Data

Oral administration of risdiplam (0, 0.75, 1.5, 2.5 mg/day) to young rats from postnatal day (PND) 4 through PND 31 resulted in decreased growth (body weight, tibia length) and delayed sexual maturation in males at the mid and high dose. The skeletal and body weight deficits persisted after cessation of dosing. Ophthalmic changes consisting of vacuoles in the anterior vitreous were seen at the high dose. Decreases in absolute B lymphocyte counts were observed at all doses after cessation of dosing. Decreases in testis and epididymis weights, which correlated with degeneration of the seminiferous epithelium in the testis, occurred at the mid and high doses; the histopathology findings were reversible, but organ weight persisted after cessation of dosing. Impaired female reproductive performance (decreased mating index, fertility index, and conception rate) was observed at the high dose. A no-effect dose for adverse developmental effects on preweaning rats was not identified. The lowest dose tested (0.75 mg/kg/day) was associated with plasma exposures (AUC) lower than that in humans at the maximum recommended human dose (MRHD) of 5 mg/day.

Oral administration of risdiplam (0, 1, 3, or 7.5 mg/day) to young rats from PND 22 through PND 112 produced a marked increase in micronuclei in the bone marrow, male reproductive organ histopathology (degeneration/necrosis of the seminiferous tubule epithelium,

oligo/aspermia in the epididymis, spermatic granulomas), and adverse effects on sperm parameters (decreased sperm concentration and motility, increased sperm morphology abnormalities) at the highest dose tested. Increases in T lymphocytes (total, helper, and cytotoxic) were observed at the mid and high doses. The reproductive and immune effects persisted after cessation of dosing. The no-effect dose (1 mg/kg/day) for adverse effects on postweaning juvenile rats was associated with plasma exposures (AUC) lower than that in humans at the MRHD.

8.5 Geriatric Use

Clinical studies of EVRYSDI did not include patients aged 65 years and over to determine whether they respond differently from younger patients.

8.6 Hepatic Impairment

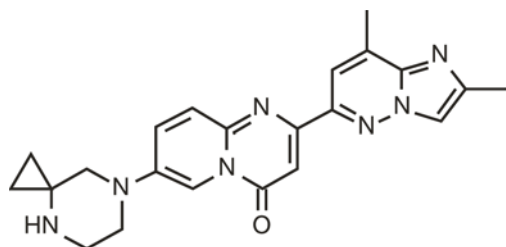
The safety and efficacy of EVRYSDI in patients with hepatic impairment have not been studied. Because risdiplam is predominantly metabolized in the liver, hepatic impairment may potentially increase the exposures to risdiplam [see *Clinical Pharmacology (12.3)*]. Avoid use of EVRYSDI in patients with impaired hepatic function.

11 DESCRIPTION

EVRYSDI for oral solution contains risdiplam, which is a survival of motor neuron 2 (SMN2)-directed RNA splicing modifier.

The chemical name of risdiplam is 7-(4,7-diazaspiro[2.5]octan-7-yl)-2-(2,8-dimethylimidazo[1,2-b]pyridazin-6-yl)pyrido-4H-[1,2-a]pyrimidin-4-one. Risdiplam has a molecular weight of 401.46 g/mol.

The molecular formula of risdiplam is C₂₂H₂₃N₇O and the chemical structure is shown below.



EVRYSDI is supplied as a powder in an amber glass bottle. Each bottle contains 60 mg of risdiplam. The inactive ingredients of EVRYSDI are: ascorbic acid, disodium edetate dihydrate, isomalt, mannitol, polyethylene glycol 6000, sodium benzoate, strawberry flavor, sucralose, and tartaric acid.

The powder is constituted with purified water to yield 60 mg/80 mL (0.75 mg/mL) of risdiplam after constitution [see *Dosage and Administration (2.4)*].

12 CLINICAL PHARMACOLOGY

12.1 Mechanism of Action

Risdiplam is a survival of motor neuron 2 (SMN2) splicing modifier designed to treat patients with spinal muscular atrophy (SMA) caused by mutations in chromosome 5q that lead to SMN protein deficiency. Using in vitro assays and studies in transgenic animal models of SMA, risdiplam was shown to increase exon 7 inclusion in SMN2 messenger ribonucleic acid (mRNA) transcripts and production of full-length SMN protein in the brain.

In vitro and in vivo data indicate that risdiplam may cause alternative splicing of additional genes, including FOXM1 and MADD. FOXM1 and MADD are thought to be involved in cell

cycle regulation and apoptosis, respectively, and have been identified as possible contributors to adverse effects seen in animals.

12.2 Pharmacodynamics

In clinical trials, EVRYSDI led to an increase in SMN protein with a greater than 2-fold median change from baseline within 4 weeks of treatment initiation. The increase was sustained throughout the treatment period (of at least 12 months) across all SMA types.

12.3 Pharmacokinetics

Pharmacokinetics of EVRYSDI have been characterized in healthy adult subjects and in patients with SMA.

After administration of EVRYSDI as an oral solution, pharmacokinetics of risdiplam were approximately linear between 0.6 and 18 mg in a single-ascending-dose study in healthy adult subjects, and between 0.02 and 0.25 mg/kg once daily in a multiple-ascending-dose study in patients with SMA. Following once-daily oral administration of risdiplam in healthy subjects, approximately 3-fold accumulation of peak plasma concentrations (C_{max}) and area under the plasma concentration-time curve (AUC_{0-24h}) was observed. Risdiplam exposures reach steady state 7 to 14 days after once-daily administration.

Absorption

Following oral administration, the time to reach maximum plasma concentration (T_{max}) is between 1 and 4 hours.

Effect of Food

In the clinical efficacy studies (Study 1 and Study 2), risdiplam was administered with a morning meal or after breastfeeding.

Distribution

The apparent volume of distribution at steady state is 6.3 L/kg.

Risdiplam is predominantly bound to serum albumin, without any binding to alpha-1 acid glycoprotein, with a free fraction of 11%.

Elimination

The apparent clearance (CL/F) of risdiplam is 2.1 L/h for a 14.9 kg patient.

The terminal elimination half-life of risdiplam was approximately 50 hours in healthy adults.

Metabolism

Risdiplam is primarily metabolized by flavin monooxygenase 1 and 3 (FMO1 and FMO3) and also by CYPs 1A1, 2J2, 3A4, and 3A7.

Parent drug was the major component found in plasma, accounting for 83% of drug-related material in circulation. The pharmacologically-inactive metabolite M1 was identified as the major circulating metabolite.

Excretion

Following a dose of 18 mg, approximately 53% of the dose (14% unchanged risdiplam) was excreted in the feces and 28% in urine (8% unchanged risdiplam).

Specific Populations

There were no clinically significant differences in the pharmacokinetics of EVRYSDI based on race or gender. Renal impairment is not expected to alter the exposures to risdiplam.

The impact of geriatric age and hepatic impairment on the pharmacokinetics of EVRYSDI has not been studied.

Pediatric Patients

Body weight and age were found to have significant effect on the pharmacokinetics of risdiplam. The estimated exposure (mean AUC_{0-24h}) for infantile-onset SMA patients (age 2 to 7 months at enrollment) at the recommended dose of 0.2 mg/kg once daily was 1930 ng.h/mL. The estimated exposure for later-onset SMA patients (2 to 25 years old at enrollment) at the recommended dose was 2050 ng.h/mL (0.25 mg/kg once daily for patients with a body weight < 20 kg and 5 mg once daily for patients with a body weight \geq 20 kg). The observed maximum concentration (mean C_{max}) was 184 ng/mL for infantile-onset SMA patients and 148 ng/mL for later-onset SMA patients.

Based on literature reports, pediatric patients less than 2 months of age are expected to have reduced activity of FMO3, which may result in increased exposure to risdiplam [see *Elimination*]. No data on risdiplam pharmacokinetics are available in patients less than 2 months of age [see *Use in Specific Populations (8.4)*].

Drug Interaction Studies

Effect of Other Drugs on EVRYSDI

Coadministration of 200 mg itraconazole (a strong CYP3A inhibitor) twice daily with a single 6 mg oral dose of risdiplam did not have a clinically relevant effect on the pharmacokinetics of risdiplam (11% increase in AUC and 9% decrease in C_{max}).

Risdiplam is a weak substrate of human MDR-1 and breast cancer resistant protein (BCRP) transporters in vitro. Human MDR-1 or BCRP inhibitors are not expected to result in a clinically significant increase of risdiplam concentrations.

Effect of EVRYSDI on Other Drugs

Risdiplam and its major circulating metabolite M1 did not induce CYP1A2, 2B6, 2C8, 2C9, 2C19, or 3A4 in vitro. Risdiplam and M1 did not inhibit (reversible or time-dependent inhibition) any of the CYP enzymes tested (CYP1A2, 2B6, 2C8, 2C9, 2C19, 2D6), with the exception of CYP3A in vitro.

EVRYSDI is a weak inhibitor of CYP3A. In healthy adult subjects, administration of EVRYSDI once daily for 2 weeks slightly increased the exposure of midazolam, a sensitive CYP3A substrate (AUC 11%; C_{max} 16%); this increase is not considered clinically relevant. Based on physiologically-based pharmacokinetic (PBPK) modeling, a similar increase is expected in children and infants as young as 2 months of age.

In vitro studies have shown that risdiplam and its major metabolite are not significant inhibitors of human MDR1, organic anion-transporting polypeptide (OATP) 1B1, OATP1B3, organic anion transporter 1 and 3 (OAT 1 and 3) transporters, and human organic cation transporter 2 (OCT2), at clinically relevant concentrations. Risdiplam and its metabolite are, however, in vitro inhibitors of the multidrug and toxin extrusion (MATE) 1 and MATE2-K transporters [see *Drug Interactions (7.1)*].

13 NONCLINICAL TOXICOLOGY

13.1 Carcinogenesis, Mutagenesis, Impairment of Fertility

Carcinogenesis

The carcinogenic potential of risdiplam has not been fully evaluated. Risdiplam was not carcinogenic in Tg.rasH2 mice when administered at oral doses of up to 9 mg/kg/day for 26 weeks.

Mutagenesis

Risdiplam was negative in an in vitro Ames assay. In an in vivo combined bone marrow micronucleus and comet assay in rat, risdiplam was clastogenic, as evidenced by an increase in micronuclei in bone marrow, but was negative in the comet assay. A pronounced increase in bone marrow micronuclei was also observed in toxicity studies in adult and juvenile rats [*see Use in Specific Populations (8.4)*].

Impairment of Fertility

Oral administration of risdiplam to rats for 4 (0, 1, 3, or 9 mg/kg/day) or 26 (0, 1, 3, or 7.5 mg/kg/day) weeks resulted in histopathological effects in the testis (degenerated spermatocytes, degeneration/atrophy of the seminiferous tubules) and epididymis (degeneration/necrosis of ductular epithelium) at the mid and/or high doses. At the high dose in the 26-week study, the testicular lesions persisted to the end of the recovery period, which corresponds, in rat, to approximately one spermatogenic cycle. The no-effect dose for adverse reproductive system effects in adult male rats (1 mg/kg/day) was associated with plasma drug exposures (AUC) similar to that in humans at the maximum recommended human dose (MRHD) of 5 mg/day.

Adverse effects of risdiplam on the testis could not be fully evaluated in the monkey because the majority of monkeys tested were sexually immature. However, oral administration of risdiplam (0, 2, 4, or 6 mg/kg/day) for 2 weeks resulted in histopathological changes in the testis (increases in multinucleate cells, germ cell degeneration) at the highest dose. At the no-effect dose for testicular toxicity in monkeys, plasma exposures were approximately 3 times that in humans at the MRHD.

Oral administration of risdiplam to postweaning juvenile rats resulted in male reproductive toxicity (degeneration/necrosis of the testis seminiferous epithelium with associated oligo/aspermia in the epididymis and abnormal sperm parameters). The no-effect dose for adverse reproductive effects in postweaning male juvenile rats was associated with plasma exposures approximately 4 times that in humans at the MRHD [*see Use in Specific Populations (8.4)*].

13.2 Animal Toxicology and/or Pharmacology

Retinal toxicity

Risdiplam-induced functional and structural retinal abnormalities were seen in animal studies. In a 39-week toxicity study in monkeys, oral administration of risdiplam (0, 1.5, 3, or 7.5/5 mg/kg/day; high dose lowered after 4 weeks) produced functional abnormalities on the electroretinogram (ERG) in all mid- and high-dose animals at the earliest examination time (Week 20). These findings were associated with retinal degeneration, detected by optical coherence tomography (OCT), on Week 22, the first examination time. The retinal degeneration, with peripheral photoreceptor loss, was irreversible. A no-effect dose for the retinal findings (1.5 mg/kg/day) was associated with plasma exposures (AUC) similar to that in humans at the maximum recommended human dose (MRHD) of 5 mg.

Effect on Epithelial Tissues

Oral administration of risdiplam to rats and monkeys resulted in histopathological changes in epithelium of the gastrointestinal (GI) tract (apoptosis/single cell necrosis), lamina propria (vacuolation), the exocrine pancreas (single cell necrosis), the skin, tongue, and larynx

(parakeratosis/hyperplasia/degeneration) with associated inflammation. The skin and GI epithelial effects were reversible. The no-effect doses for effects on epithelial tissues in rats and monkeys were associated with plasma exposures (AUC) similar to that in humans at the MRHD.

14 CLINICAL STUDIES

The efficacy of EVRYSDI for the treatment of patients with infantile-onset and later-onset SMA was evaluated in two clinical studies, Study 1 (NCT02913482) and Study 2 (NCT02908685).

The overall findings of these studies support the effectiveness of EVRYSDI in SMA patients 2 months of age and older and appear to support the early initiation of treatment with EVRYSDI.

14.1 Infantile-Onset SMA

Study 1 was an open-label, 2-part study to investigate the efficacy, safety, pharmacokinetics, and pharmacodynamics of EVRYSDI in patients with Type 1 SMA (symptom onset between 28 days and 3 months of age). Part 1 of Study 1 (n = 21) provides efficacy and safety data in patients with Type 1 SMA. Additional safety information is provided by Part 2 of Study 1 (n = 41) in patients with Type 1 SMA [see *Adverse Reactions (6.1)*].

In Part 1 of Study 1, patients (n = 21) were enrolled in one of two dosage cohorts. Patients in the higher-dosage cohort (n = 17) had their dosage adjusted to the recommended dosage of 0.2 mg/kg/day before 12 months of treatment, while patients in the low-dosage cohort (n = 4) did not.

Effectiveness was established based on the ability to sit without support for at least 5 seconds (as measured by Item 22 of the Bayley Scales of Infant and Toddler Development – Third Edition (BSID-III) gross motor scale) and on the basis of survival without permanent ventilation. Permanent ventilation was defined as requiring a tracheostomy or more than 21 consecutive days of either non-invasive ventilation (≥ 16 hours per day) or intubation, in the absence of an acute reversible event.

The median age of onset of clinical signs and symptoms of Type 1 SMA in patients enrolled in Part 1 of Study 1 was 2.0 months (range: 0.9 to 3.0); 71% of patients were female, 81% were Caucasian, and 19% were Asian. The median age at enrollment was 6.7 months (range: 3.3 to 6.9), and the median time between onset of symptoms and first dose was 4.0 months (range: 2.0 to 5.8). All patients had genetic confirmation of homozygous deletion or compound heterozygosity predictive of loss of function of the SMN1 gene, and two SMN2 gene copies.

In Study 1 Part 1, the median duration of EVRYSDI treatment was 14.8 months (range: 0.6 to 26.0), and 19 patients were treated for a minimum duration of 12 months.

Of the patients who were treated with the recommended dosage of EVRYSDI 0.2 mg/kg/day, 41% (7/17) were able to sit independently for ≥ 5 seconds (BSID-III, Item 22) after 12 months of treatment. These results indicate a clinically meaningful deviation from the natural history of untreated infantile-onset SMA. As described in the natural history of untreated infantile-onset SMA, patients would not be expected to attain the ability to sit independently, and no more than 25% of these patients would be expected to survive without permanent ventilation beyond 14 months of age. After 12 months of treatment with EVRYSDI, 90% (19/21) of patients were alive without permanent ventilation (and reached 15 months of age or older). After a minimum of 23 months of treatment with EVRYSDI, 81% (17/21) of all patients were alive without permanent ventilation (and reached an age of 28 months or older; median 32 months; range 28 to 45 months).

14.2 Later-Onset SMA

Study 2 was a 2-part, multicenter trial to investigate the efficacy, safety, pharmacokinetics, and pharmacodynamics of EVRYSDI in patients diagnosed with SMA Type 2 or Type 3. Part 1 of

Study 2 was dose-finding and exploratory in 51 patients (14% ambulatory). Part 2 was randomized, double-blind, placebo-controlled, and is described below.

The primary endpoint in Study 2 Part 2 was the change from baseline to Month 12 in the Motor Function Measure 32 (MFM32) score. A key secondary endpoint was the proportion of patients with a 3-point or greater change from baseline to Month 12 in the MFM32 total score. The MFM32 measures motor function abilities that relate to daily functions. The total MFM32 score is expressed as a percentage (range: 0 to 100) of the maximum possible score, with higher scores indicating greater motor function. Another key secondary endpoint was the Revised Upper Limb Module (RULM). The RULM is a tool used to assess motor performance of the upper limb in SMA patients. It tests proximal and distal motor functions of the arm. The total score ranges from 0 (all the items cannot be performed) to 37 (all the activities are achieved fully without any compensatory maneuvers).

Study 2 Part 2 enrolled 180 non-ambulatory patients with Type 2 (71%) or Type 3 (29%) SMA. Patients were randomized 2:1 to receive EVRYSDI at the recommended dosage [*see Dosage and Administration (2.2)*] or placebo. Randomization was stratified by age group (2 to 5, 6 to 11, 12 to 17, or 18 to 25 years of age).

The median age of patients at the start of treatment was 9.0 years (range 2 to 25), and the median time between onset of initial SMA symptoms and first treatment was 102.6 months (range 1 to 275). Of the 180 patients included in the trial, 51% were female, 67% were Caucasian, and 19% were Asian. At baseline, 67% of patients had scoliosis (32% of them with severe scoliosis). Patients had a mean baseline MFM32 score of 46.1, and RULM score of 20.1. Overall baseline demographic characteristics were reasonably balanced between the treatment groups (EVRYSDI and placebo), with the exception of scoliosis (63% in the EVRYSDI arm vs. 73% in the placebo group).

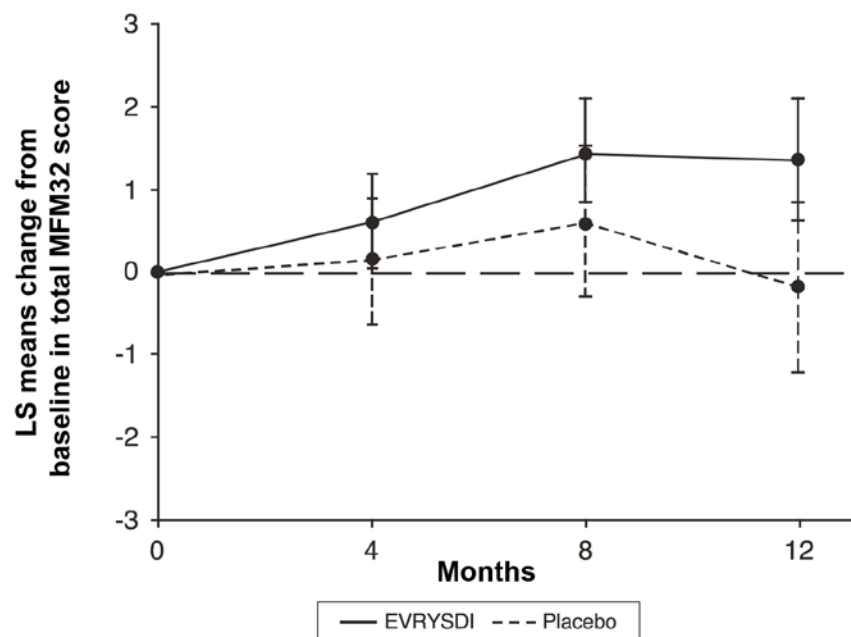
The primary analysis on the change from baseline in MFM32 total score at Month 12 showed a clinically meaningful and statistically significant difference between patients treated with EVRYSDI and placebo. The results of the primary analysis and key secondary endpoints are shown in Table 3 and Figure 1.

Table 3 Summary of Efficacy in Patients with Later-Onset SMA at Month 12 of Treatment (Study 2 Part 2)

| Endpoint | EVRYSDI (N = 120) | Placebo (N = 60) |
|---|--------------------------------------|---------------------|
| Primary Endpoint: | | |
| Change from baseline in total MFM32 score at Month 12, LS means (95% CI) ^{1,2,3} | 1.36 (0.61, 2.11) | -0.19 (-1.22, 0.84) |
| Difference from Placebo, Estimate (95% CI) ¹ p-value | 1.55 (0.30, 2.81) 0.0156 | |
| Secondary Endpoints: | | |
| Proportion of patients with a change from baseline MFM32 total score of 3 or more at Month 12 (95% CI) ^{2,3} | 38.3% (28.9, 47.6) | 23.7% (12.0, 35.4) |
| Odds ratio for overall response (95% CI) adjusted ⁴ (unadjusted) p-value ⁵ | 2.35 (1.01, 5.44) 0.0469 (0.0469) | |
| Change from baseline in total score of RULM at Month 12, LS means (95% CI) ^{1, 6} | 1.61 (1.00, 2.22) | 0.02 (-0.83, 0.87) |
| Difference from Placebo, Estimate (95% CI) adjusted ⁴ (unadjusted) p-value ¹ | 1.59 (0.55, 2.62) 0.0469 (0.0028) | |

- ¹. The Mixed Model Repeated Measure (MMRM) analysis included the change from baseline total score as the dependent variable and as independent variables the baseline total score, treatment group, time, treatment-by-time interaction, and the randomization stratification variable of age group (2 to 5, 6 to 11, 12 to 17, 18 to 25).
- ². The MFM total score was calculated according to the user manual, expressed as a percentage of the maximum score possible for the scale (i.e., sum of the 32 item scores divided by 96 and multiplied by 100).
- ³. Based on the missing data rule for MFM32, 6 patients were excluded from the analysis (EVRYSDI n = 115; placebo control n = 59).
- ⁴. The adjusted p-value was obtained for the endpoints included in the hierarchical testing and was derived based on all the p-values from endpoints in order of the hierarchy up to the current endpoint.
- ⁵. The logistic regression analysis included the baseline total score, treatment and age group as independent variables.
- ⁶. Based on the missing data rule for RULM, 3 patients were excluded from the analysis (EVRYSDI n = 119; placebo control n = 58).

Figure 1 Mean Change from Baseline in Total MFM32 Score Over 12 Months (Study 2 Part 2)^{1,2}



¹ Error bars denote the 95% confidence interval.

² The MFM total score was calculated according to the user manual, expressed as a percentage of the maximum score possible for the scale (i.e., sum of the 32 item scores divided by 96 and multiplied by 100).

16 HOW SUPPLIED/STORAGE AND HANDLING

16.1 How Supplied

Each amber glass bottle of EVRYSDI is packaged with a bottle adapter, two 6 mL reusable oral syringes, and two 12 mL reusable oral syringes. EVRYSDI for oral solution is a light yellow, yellow, greyish yellow, greenish yellow, or light green powder. Each bottle contains 60 mg of risdiplam (NDC 50242-175-07).

16.2 Storage and Handling

Store the dry powder at 20°C to 25°C (68°F to 77°F), excursions permitted between 15°C to 30°C (59°F to 86°F) [see USP controlled room temperature]. Keep in the original carton.

Keep the constituted oral solution of EVRYSDI in the original amber bottle to protect from light. Store in a refrigerator at 2°C to 8°C (36°F to 46°F) [see *Dosage and Administration (2.4)*].

17 PATIENT COUNSELING INFORMATION

Advise the patient to read the FDA-approved patient labeling (Patient Information and Instructions for Use).

Pregnancy and Fetal Risk

Inform pregnant women and women of reproductive potential that, based on animal studies, EVRYSDI may cause fetal harm [see *Use in Specific Populations (8.1)*].

Discuss with women of childbearing age whether they are pregnant, might be pregnant, or are trying to become pregnant.

Advise women of childbearing potential to use effective contraception during treatment with EVRYSDI and for at least 1 month after stopping EVRYSDI.

Advise a female patient to immediately inform the prescriber if she is pregnant or planning to become pregnant [*see Use in Specific Populations (8.3)*].

Potential Effects on Male Fertility

Advise male patients that their fertility may be compromised while on treatment with EVRYSDI [*see Use in Specific Populations (8.3)*].

Instructions for Preparation of Oral Solution

Advise patients to ensure that EVRYSDI is in liquid form when received from the pharmacy.

Instruct patients/caregivers to take EVRYSDI after a meal or after breastfeeding at approximately the same time each day. However, instruct caregivers to not mix EVRYSDI with formula or milk.

Instruct patients/caregivers to take EVRYSDI immediately after it is drawn up into the reusable oral syringe [*see Dosage and Administration (2.1)*].

EVRYSDI™ [risdiplam]

Distributed by:

Genentech, Inc.

A Member of the Roche Group

1 DNA Way

South San Francisco, CA 94080-4990

EVRYSDI is a trademark of Genentech, Inc.

©2020 Genentech, Inc. All rights reserved.

Patient Information
EVERYSDI™ [ev-RIZ-dee]
(risdiplam)
for oral solution

What is EVERYSDI?

- EVERYSDI is a prescription medicine used to treat spinal muscular atrophy (SMA) in adults and children 2 months of age and older.
- It is not known if EVERYSDI is safe and effective in children under 2 months of age.

Before taking EVERYSDI, tell your healthcare provider about all of your medical conditions, including if you:

- have liver problems.
- are pregnant or plan to become pregnant. If you are pregnant, or are planning to become pregnant, ask your healthcare provider for advice before taking this medicine. EVERYSDI may harm your unborn baby.
- are a woman who can become pregnant:
 - Before you start your treatment with EVERYSDI, your healthcare provider may test you for pregnancy. Because EVERYSDI may harm your unborn baby, you and your healthcare provider will decide if taking EVERYSDI is right for you during this time.
 - Talk to your healthcare provider about birth control methods that may be right for you. Use birth control while on treatment and for at least 1 month after stopping EVERYSDI.
- are an adult male planning to have children: EVERYSDI may affect a man's ability to have children (fertility). If this is of concern to you, make sure to ask a healthcare provider for advice.
- are breastfeeding or plan to breastfeed. It is not known if EVERYSDI passes into breast milk and may harm your baby. If you plan to breastfeed, discuss with your healthcare provider about the best way to feed your baby while on treatment with EVERYSDI.

Tell your healthcare provider about all the medicines you take, including prescription and over-the-counter medicines, vitamins, and herbal supplements. Keep a list of them to show your healthcare provider and pharmacist when you get a new medicine.

How should I take EVERYSDI?

See the detailed Instructions for Use that comes with EVERYSDI for information on how to take or give EVERYSDI oral solution.

- You should receive EVERYSDI from the pharmacy as a liquid that can be given by mouth or through a feeding tube. The liquid solution is prepared by your pharmacist. If the medicine in the bottle is a powder, **do not use it**. Contact your pharmacist for a replacement.
- Avoid getting EVERYSDI on your skin or in your eyes. If EVERYSDI gets on your skin, wash the area with soap and water. If EVERYSDI gets in your eyes, rinse your eyes with water.

Taking EVERYSDI

- Your healthcare provider will tell you how long you or your child needs to take EVERYSDI. Do not stop treatment with EVERYSDI unless your healthcare provider tells you to.
- For infants and children, your healthcare provider will determine the daily dose of EVERYSDI needed based on your child's age and weight. For adults, take 5 mg of EVERYSDI daily.
 - Take EVERYSDI exactly as your healthcare provider tells you to take it. Do not change the dose without talking to your healthcare provider.
- Take EVERYSDI 1 time daily after a meal (or after breastfeeding for a child) at approximately the same time each day. Drink water afterwards to make sure EVERYSDI has been completely swallowed.
- Do not mix EVERYSDI with formula or milk.
- If you are unable to swallow and have a nasogastric or gastrostomy tube, EVERYSDI can be given through the tube.
- If you miss a dose of EVERYSDI:
 - If you remember the missed dose within 6 hours of when you normally take EVERYSDI, then take or give the dose. Continue taking EVERYSDI at your usual time the next day.
 - If you remember the missed dose more than 6 hours after you normally take EVERYSDI, skip the missed dose. Take your next dose at your usual time the next day.
- If you do not fully swallow the dose, or you vomit after taking a dose, **do not take** another dose of EVERYSDI to make up for that dose. Wait until the next day to take the next dose at your usual time.

Reusable Oral Syringes

- Your pharmacist will provide you with the reusable oral syringes that are needed for taking your medicine and explain how to use them. Wash the syringes per instructions after use. Do not throw them away.
- Use the reusable oral syringes provided by your pharmacist (you should receive 2 identical oral syringes) to measure your or your child's dose of EVRYSDI, as they are designed to protect the medicine from light. Contact your healthcare provider or pharmacist if your oral syringes are lost or damaged.
- Once transferred from the bottle to the oral syringe, take EVRYSDI right away. Do not store the EVRYSDI solution in the syringe. If EVRYSDI is not taken within 5 minutes of when it is drawn up, EVRYSDI should be thrown away from the reusable oral syringe, and a new dose should be prepared.

What are the possible side effects of EVRYSDI?

The most common side effects of EVRYSDI include:

- **For later-onset SMA:**
 - fever
 - diarrhea
 - rash
- **For infantile-onset SMA:**
 - fever
 - runny nose, sneezing, sore throat, and cough (upper respiratory infection)
 - constipation
 - diarrhea
 - lung infection
 - vomiting
 - rash

These are not all of the possible side effects of EVRYSDI. For more information, ask your healthcare provider or pharmacist.

Call your doctor for medical advice about side effects. You may report side effects to FDA at 1-800-FDA-1088.

How should I store EVRYSDI?

- Store EVRYSDI in the refrigerator between 36°F to 46°F (2°C to 8°C). Do not freeze.
- Keep EVRYSDI in an upright position in the original amber bottle to protect from light.
- Throw away (discard) any unused portion of EVRYSDI 64 days after it is mixed by the pharmacist (constitution). Please see the Discard After date written on the bottle label. (See the **Instructions for Use** that comes with EVRYSDI).

Keep EVRYSDI and all medicines out of the reach of children.

General information about the safe and effective use of EVRYSDI.

Medicines are sometimes prescribed for purposes other than those listed in a Patient Information leaflet. Do not use EVRYSDI for a condition for which it was not prescribed. Do not give EVRYSDI to other people, even if they have the same symptoms you have. It may harm them. You can ask your pharmacist or healthcare provider for information about EVRYSDI that is written for health professionals.

What are the ingredients in EVRYSDI?

Active ingredient: risdiplam

Inactive ingredients: ascorbic acid, disodium edetate dihydrate, isomalt, mannitol, polyethylene glycol 6000, sodium benzoate, strawberry flavor, sucralose, and tartaric acid.

Distributed by: **Genentech, Inc.**, A Member of the Roche Group, 1 DNA Way, South San Francisco, CA 94080-4990

EVRYSDI is a trademark of Genentech, Inc.

©2020 Genentech, Inc. All rights reserved.

For more information, go to www.EVRYSDI.com or call 1-833-387-9734.

This Patient Information has been approved by the U.S. Food and Drug Administration.

Approved: 8/2020